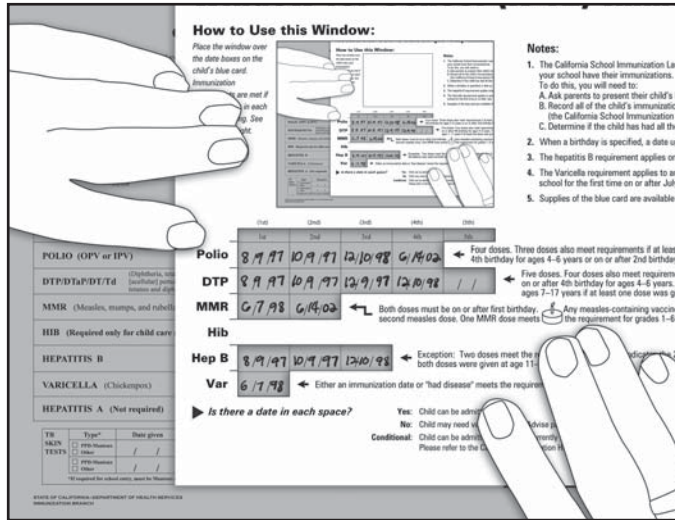


# Window for School (K-12) Immunizations

## How to Use this Window:

Place the window over the date boxes on the child's blue card. Immunization requirements are met if there are dates in each window opening. See also notes at right.



## Notes:

- The California School Immunization Law requires that all children entering your school have their immunizations. To do this, you will need to:
  - Ask parents to present their child's Immunization Record;
  - Record all of the child's immunization dates on a blue card (the California School Immunization Record, PM-286);
  - Determine if the child has had all the immunizations required.
- When a birthday is specified, a date up to 4 days before the birthday is O.K.
- The hepatitis B requirement applies only to kindergarten and 7th grade.
- The Varicella requirement applies to any child admitted to a California school for the first time on or after July 1, 2001.
- Supplies of the blue card are available free from local health departments.

	(1st)	(2nd)	(3rd)	(4th)	(5th)
<b>Polio</b>					
<b>DTP</b>					
<b>MMR</b>					
<b>Hib</b>					
<b>Hep B</b>					
<b>Var</b>					

← Four doses. Three doses also meet requirements if at least one dose was given on or after 4th birthday for ages 4–6 years or on or after 2nd birthday for ages 7–17 years.

← Five doses. Four doses also meet requirements if at least one dose was given on or after 4th birthday for ages 4–6 years. Three doses meet requirements for ages 7–17 years if at least one dose was given on or after 2nd birthday.

← Both doses must be on or after first birthday. Any measles-containing vaccine meets the requirement for the second measles dose. One MMR dose meets the requirement for grades 1–6 and 8–12.

← Exception: Two doses meet the requirement if the doctor indicates the 2-dose formulation was used and both doses were given at age 11–15 years.

← Either an immunization date or "had disease" meets the requirement.

### ► Is there a date in each space?

**Yes:** Child can be admitted.

**No:** Child may need vaccine dose(s). Advise parents if a dose(s) is needed.

**Conditional:** Child can be admitted if he/she is currently up-to-date, but their next dose(s) are not yet due. Please refer to the California Immunization Handbook for more details.